

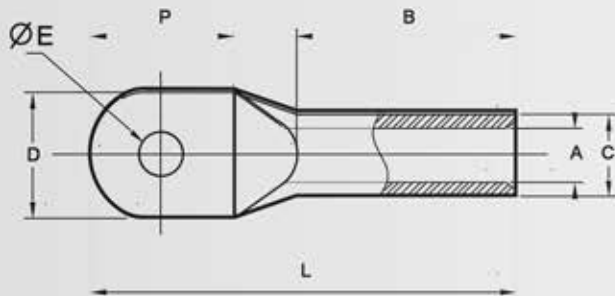
## COMPRESSION CABLE LUGS

STANDARD : DIN 46235

MATERIAL : E-COPPER/ALUMINUM/BIMETALLIC

FINISH : TINNED PLATED

FEATURES : WITH or WITHOUT INSPECTION HOLE



CABLE mm <sup>2</sup>	ØE	DIMENSIONS IN mm						PER BOX	Cat. No.
		A	C	D	P	B	L		
10	6.4	4.5	7	9	16	10	35	400	NPL-10M06
	8.4			13	20		37		NPL-10M08
16	6.4	5.5	8.5	13	15.5	20	44	150	NPL-16M06
	8.4				20		46		NPL-16M08
25	6.4	7	10	14	15.5	20	46	150	NPL-25M06
	8.4			16	20		48		NPL-25M08
35	8.4	8.2	12.5	17	20	20	54	100	NPL-35M08
	10.5			19	24				NPL-35M10
50	13	10	14.5	21	26	28	64	75	NPL-35M12
	8.4			20	20				NPL-50M08
70	10.5	11.5	16.5	22	24	28	67	50	NPL-50M10
	13			24	26				NPL-50M12
95	8.4	13.5	19	20	20	35	78	50	NPL-70M08
	10.5			24	24				NPL-70M10
120	13	15.5	21	26	26	35	86	25	NPL-70M12
	10.5			28	24				NPL-95M10
150	13	17	23.5	28	24	35	94	25	NPL-95M12
	17			31	33				NPL-120M10
185	10.5	19	25.5	32	31	40	98	20	NPL-120M12
	13			39	39				NPL-120M16
240	17	21.5	29	34	31	40	108	10	NPL-150M10
	21			33	33				NPL-150M12
300	17	24.5	31	37	33	50	111	10	NPL-150M16
	21			39	39				NPL-185M10
400	17	27.5	38.5	42	31	70	101	5	NPL-185M12
	21			39	39				NPL-185M16
500	17	31	42	42	31	70	113	5	NPL-240M12
	21			39	39				NPL-240M16
630	17	34	44	48	31	80	122	5	NPL-240M20
	21			39	39				NPL-300M16
800	17	40	52	54	31	100	140	1	NPL-300M20
	21			39	39				NPL-400M16
1000	17	44	58	60	31	100	150	1	NPL-400M20
	21			39	39				NPL-500M16
1000	27	44	58	62	31	100	160	1	NPL-500M20
	27			39	39				NPL-630M16
1000	21	40	52	75	31	100	195	1	NPL-630M20
	27			39	39				NPL-800M16
1000	21	44	58	85	31	100	195	1	NPL-800M20
	27			39	39				NPL-1000M20
1000	21	44	58	85	31	100	195	1	NPL-1000M25
	27			39	39				NPL-1000M25